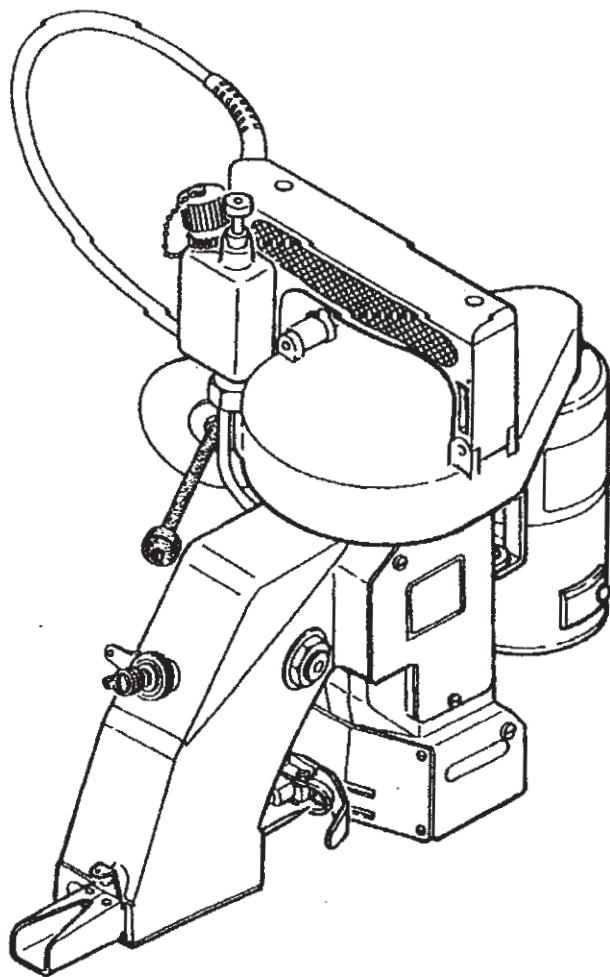


MODEL

- GK26 - 1
- GK26 - 2
- GK26 - 1A
- GK26 - 2A
- GK26 - 1H

PORTABLE FILLED BAG CLOSING MACHINE



INSTRUCTION MANUAL/PARTS LIST

CONTENS

| | |
|--|---|
| 1. SPECIFICATIONS | 1 |
| 2. PREPARATION FOR START | 2 |
| 1. Oiling | 2 |
| 2. Needle Setting | 2 |
| 3. Threading | 2 |
| 3. START | 3 |
| 4. ADJUSTMENTS | 4 |
| 4 - 1. Thread Tension | 4 |
| 4 - 2. Position of Needle and Loooper | 4 |
| 4 - 3. Position of Feed Dog | 4 |
| 4 - 4. Pressure of Presser Foot | 4 |
| 4 - 5. For Replacement or Adjustment of Ball Rod | 4 |
| 5. LUBRICATOR | 5 |
| 6. MAINTENANCE | 6 |
| 7. ORDERING PARTS | 7 |

1. SPECIFICATIONS

TECHNICAL DETAILS

| | |
|---|---|
| 1. Seam | Single Thread Chain Stitch |
| 2. Stitch Range(mm) | 6.5(fixed) |
| 3. Revolution(rpm) | 1250 |
| 4. Needle | DN×1#25 |
| 5. Thread(vinylon, synthetic or cotton) | 20/6 |
| 6. Bag Material To Be Closed | Kraft Paper, pp/PE, Woven cloth, Cotton, Hessian, Jute |
| 7. Drive Motor | 90W |
| 8. Power Supply | 110,220 or 240V, A. C. |
| 9. Net Weight(Kg) | 5.9Kg |
| 10. Machine Dimension(mm) | |
| GK26 - 1, GK26 - 1A | 275mmW, 370mmL, 305mmH |
| GK26 - 2, GK26 - 2A | 320mmW, 370mmL, 305mmH |

STANDARD ACCESSORIES

| | |
|------------------------|-------|
| 1. Needles DN×1#25 | 10pcs |
| 2. Thread Vinylon 20/6 | 1roll |
| 3. Timing Belt | 1pcs |
| 4. Looper | 1pcs |
| 5. Motor Brushes | 2pcs |
| 6. Screw Driver | 1pcs |
| 7. Forceps | 1pcs |
| 8. Hex Wrench | 1pcs |
| 9. Oiler | 1pcs |

2. PREPARATION FOR START

1. Oiling (Fig. 1)

Oiling is imperative to keep the machine in good operating condition. Pour oil in the reservoir (capacity 45 cc). To begin the flow of oil to the machine, push the button of the lubricator ten times continuously before starting the machine. This should dispense enough oil for an average running of four hours under normal operating conditions. Do not run the machine without oil as it could causes a machine failure or break down.

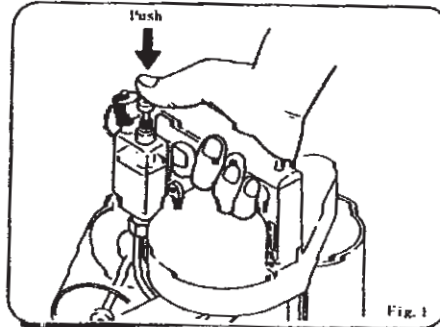


Fig. 1

2. Needle Setting (Fig. 2,3,4)

Turn the pulley until Needle Bar reaches its highest position. Loosen Needle Bar Clamping Nut, and set Needle in the Bar as deep as it will go. Be sure to set a Needle with its concave part facing correctly toward the Loper. Fix Clamping Nut tightly, otherwise Needle may come loose during operation and break.

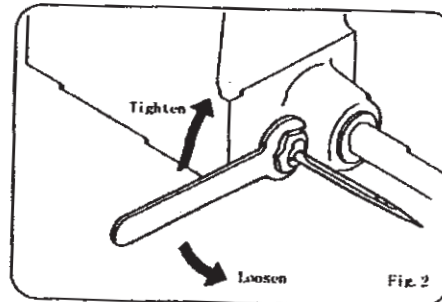


Fig. 2

3. Threading (Fig. 5)

The machine is delivered being threaded to show you proper threading of the machine, which is shown in Fig. 5, for identification. Follow the guide numbers 1 to 7 of Fig. 5.

- | | |
|-----------------|-----------------|
| ① Thread Eyelet | ⑤ Needle Bar |
| ② Tension Disc | ⑥ Thread Eyelet |
| ③ Thread Eyelet | ⑦ Needle |
| ④ Thread Eyelet | |

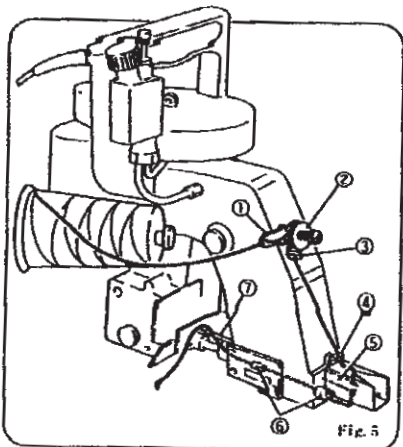


Fig. 5

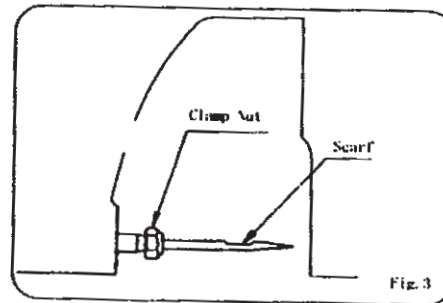


Fig. 3

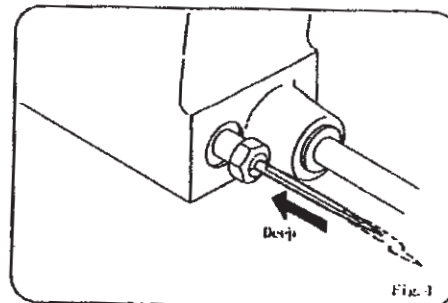


Fig. 4

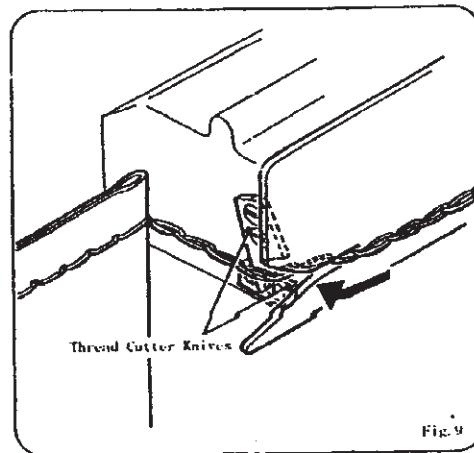
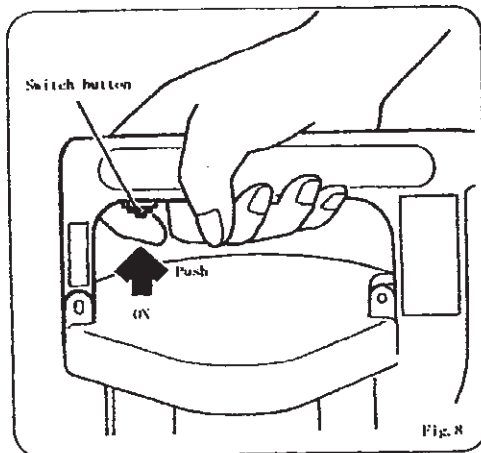
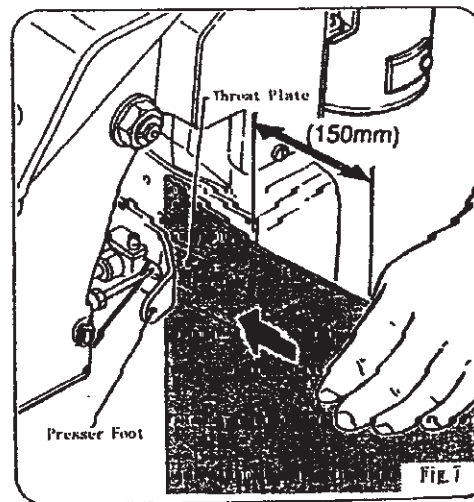
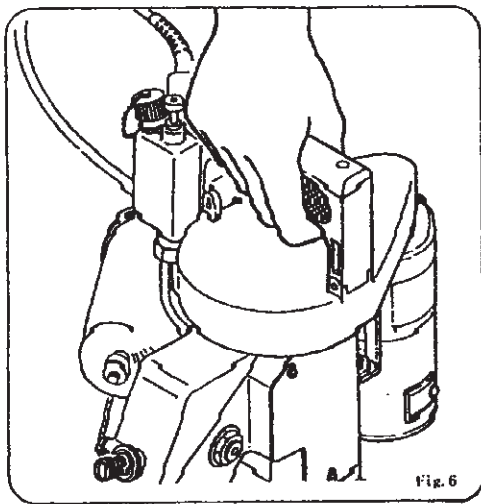
3. START

Before starting, make sure that the supply voltage accords with the specification of the motor.

Hold the machine in your right hand and place your index finger on the switch button on the handle. (Fig. 6)

Hold the bag in your left hand lightly and insert the bag mouth between Feed Dog and Presser Foot. (Fig. 7)

7)



Run the machine while keeping the bag straight. Never pull or pull back the bag.

After closing, the thread is cut by the built-in nibbler type cutter.

When cutting the thread, leave at least 3 cm long extended tail to prevent the unwilling loosening of the seam. (Fig. 9)

Run the machine with empty bags and make sure you are well versed in its operation before entering into actual operation.

4. ADJUSTMENTS

Important!

When adjusting the machine or replacing parts, always disconnect the Electric Cord from the power source.

This is important in view of safety to the operator and adjuster.

4 - 1. Thread Tension

Thread Tension is adjustable by turning the Thread Tension Nut.

Turn the Nut clockwise for tighter tension and counter - clockwise for looser.

4 - 2. Position of Needle and Loper(Fig. 10)

Looper must pass the concave part of Needle with clearance of 0.1 mm as shown in Fig. 10.

Adjustment of the clearance can be done after loosening the screw of Loper Rocker.

4 - 3. Position of Feed Dog

When installing a new feed dog ensure that it is positioned correctly onto the feed dog carrier block and lightly tighten the fixing screw. Check that the feed dog teeth are 2.8mm above the throat plate when the feed dog is in the highest position before final tightening of the fixing screw.

4 - 4. Pressure of Presser Foot

When to adjust the pressure of Presser Foot, take out Needle Bar Guard and loosen Screw of Presser Bar Connection. Move up Presser Bar to increase the pressure and down to decrease. After the adjustment, tighten the Screw firmly.

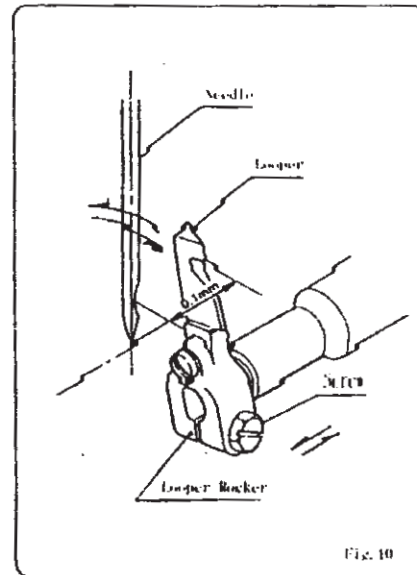


Fig. 10

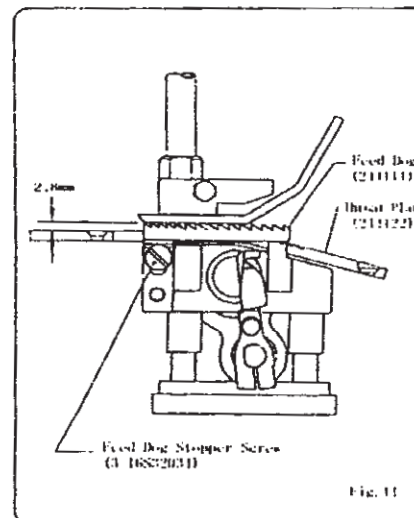


Fig. 11

4-5. For replacement or adjustment of Ball Rod, refer to Fig. 12.

Take out Screw ① and disconnect Rod End ② from Needle Bar Lever ③. After loosening the Nut ④, adjust the clearance between Connecting Rod ⑤ and Rod End ②, so that Needle Bar moves in the center of the clearance between the upper and lower Presser Bar Bushings. (Needle Bar stroke is 37 mm).

To fix Eccentric Cam ⑦ on Main Shaft ⑧, tighten the Screws ⑨ and ⑩ on Main Shaft ⑧ (Eccentric Cam ⑦ should contact Spacer ⑩ slightly).

The position of Needle is adjusted so that the distance between the point of Needle (at its highest position) and Throat Plate is 13 mm, after loosening screw on Needle Bar Connection Assembly ⑥ in Fig. 12.

① Screw 11/64S40089

② Rod End 6APOS8

③ Needle Bar Lever 242051A

④ Nut IN8

⑤ Connecting Rod Assembly 242011A

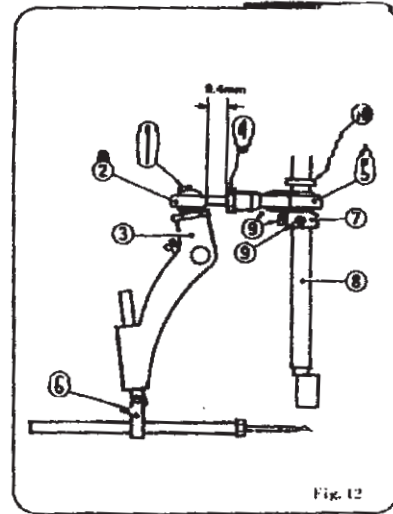
⑥ Needle Bar Connection Assembly 242101A

⑦ Eccentric Cam (part of Connecting Rod Assembly) 242011

⑧ Main Shaft 241101

⑨ ⑩ Screw 11/64S40001

⑩ Spacer 241161



5. LUBRICATOR

1. Operation

The lubricator comprises a pump and a reservoir. The reservoir holds max 45 cc of oil. (Effective oil volume is 28 cc.)

Use mineral oil 22 - 32 cSt at 40°C (Eg. Tellus oil #32).

To operate the lubricator;

1. First unscrew the reservoir cap by half a turn. *
2. Push the button to its lowest position (stroke: 12mm).
3. When released, the button will automatically return to its original position.
4. Lastly, tighten the cap to prevent oil leak during operation.

* Repeated working on the button without first loosening the cap may produce negative pressure in the reservoir, and the dust in the atmosphere

may be easily introduced in it when the cap is loosened.

2. Maintenance

1. Keep off dust or foreign matter when to fill oil (They may cause jamming of the piston and the check valve).
2. Rate of discharge is fixed and not adjustable (0.08cc per push).
3. At high temperatures, grease may run along points (A). This is normal, grease being used when the lubricator was assembled in our plant.
4. Reservoir is made of high density polyethyene. Keep off fire and refrain from using organic, benzene, or xylene chemicals for cleaning. Check periodically for correct working of the pump. (Repeat oil feed and look at the oil through the discharge pipe.)

Troubleshooting

| Trouble | Cause | Remedy |
|---|---|---|
| Oil not fed. Full stroke movement not obtainable. Button will not return. | Low oil level. Dust attached on the interior wall of the pumping chamber. Dust accumulated, or break of spring. | Fill oil. Replace lubricator. Replace lubricator. |
| Oil leak fromⒶ | Wornout or displaced seal of O - Ring. | Replace lubricator. |
| Oil leak fromⒷ | Wornout or displaced seal of packing. | Replace lubricator. |
| Oil leak fromⒸ | Loose plug. | Tighten plug or Replace lubricator. |

PUSH - BUTTON LUBRICATOR

6. MAINTENANCE

Clean the machine at the end of the day's work, and oil the bushings, shaft, ect. that are not lubricated by a lubricator. Wipe dust and other foreign matter off the Feed Dog teeth Looper and Throat Plate eyelet where they are easily gathered. Care should be taken to keep the machine free from dust, especially when to leave it unused for some time.

Important!

The motor body should not be opened for the maintenance.

When adjusting the machine or replacing parts, always disconnect the Electric Cord from the power source.

This is important in view of safety to the operator and adjuster.

[NOTES ON CARRYING AND STORAGE]

1. Carry the machine in a storage box.
2. After the use of the machine, remove the plug, clean the dirt, take the thread from the machine and then put it into a storage box.
We suggest you to use a soft brush to clean the rear of the machine.
3. Never store the machine under the sunlight dried or wet condition.

7. ORDERING PARTS

The parts list showing all the parts used in the machine is included in this book.

Check the list, and specify parts numbers and quantities required clearly.

Send your order to the nearest agent, distributor or one of our branch offices.

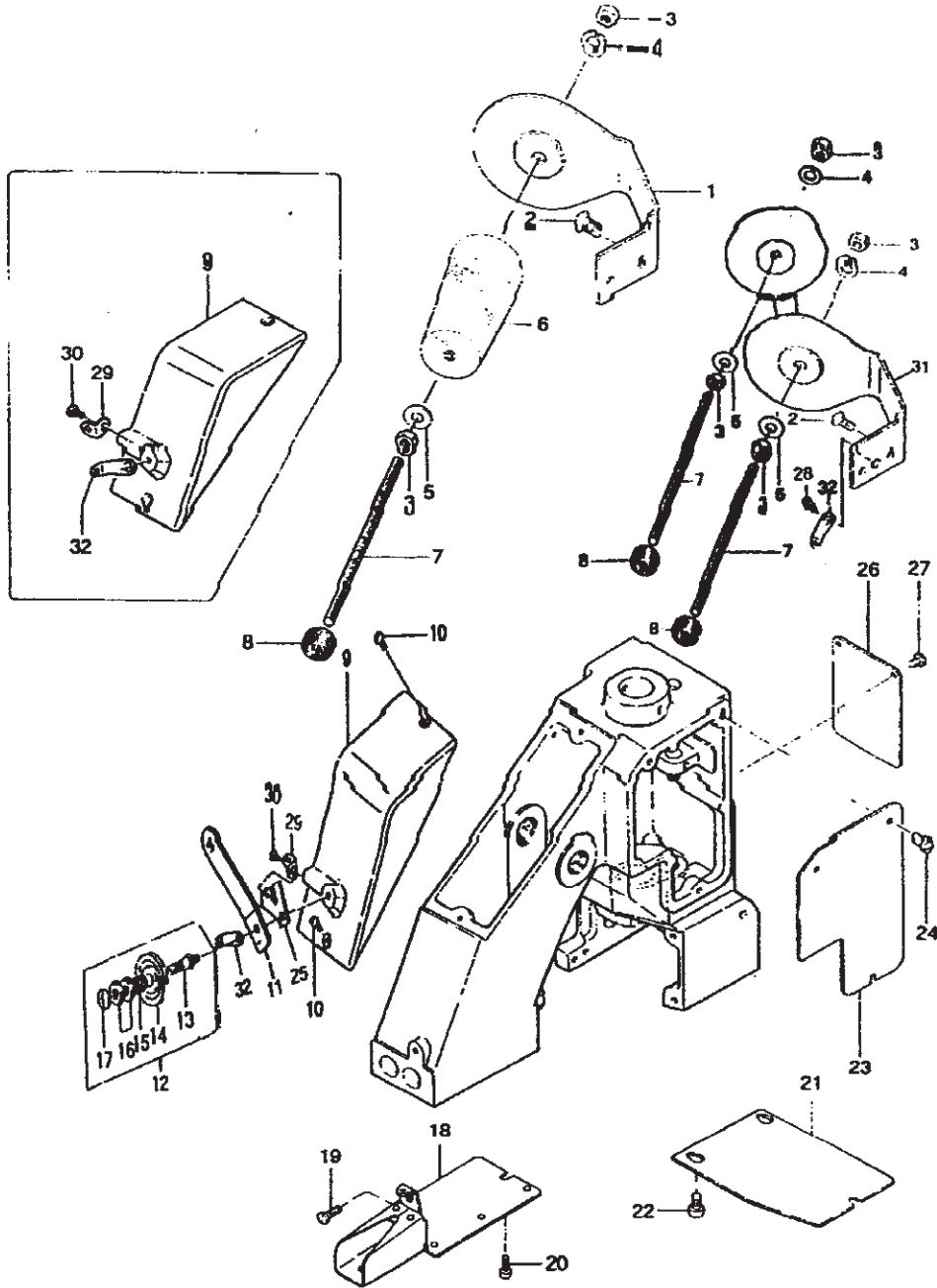
1. Description of each part and its stamp number is described in this parts list. Screws and nuts for parts are shown adjacent to the relevant parts. When ordering parts, describe clearly stamp number with its name of part.
2. The parts which have no Ref. Number can not be delivered independently; always order it as an assembly.
3. A set of assembled parts is represented by the stamp number of its main parts.
4. The last figure on the parts stamp number advances on each improvement of the parts.
5. Parts No. described in [] of Remarks means old parts No.

* The parts list is subject to change without prior notice.

CONTENTS

| | |
|--|----|
| (1) THREAD TENSION AND COVERS PARTS | 8 |
| (2) BUSHING, OILINGS AND HANDLE PARTS | 10 |
| (3) NEEDLE BAR , PRESSER BAR AND DRIVING PARTS | 12 |
| (4) LOOPER DRIVING PARTS | 14 |
| (5) FEED DRIVING AND THREAD CUTTER PARTS | 16 |
| (6) MOTOR PARTS(For Totally Enclosed Type Motor) | 18 |
| (7) SPECIAL PARTS FOR GK26 - 1H TYPE | 20 |

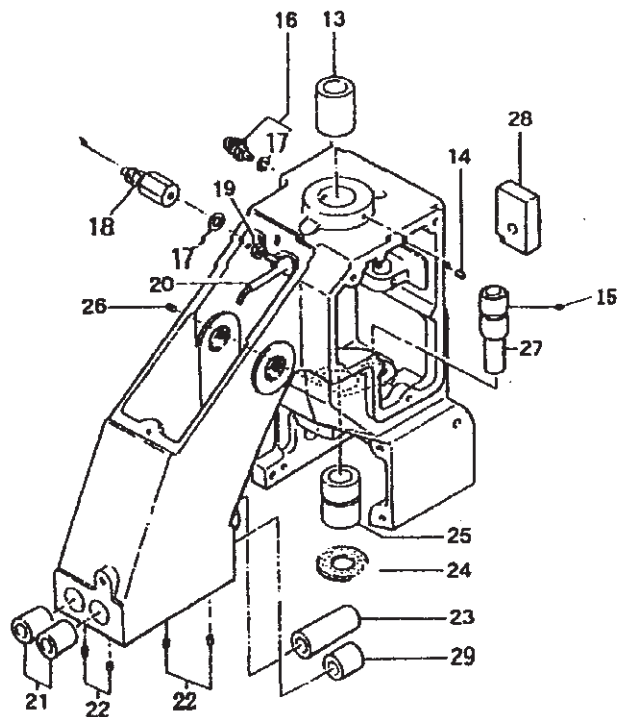
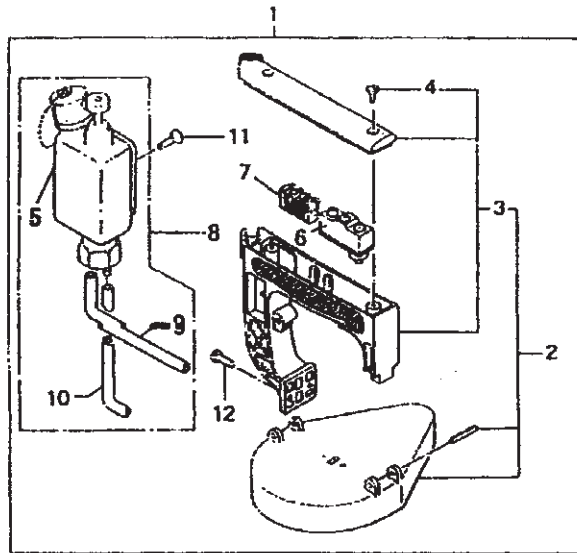
(1) THREAD TENSION AND COVER PARTS



(1) THREAD TENSION AND COVER PARTS

| Ref No. | Part No. | Description | Part No. NP-7 | Q'ty | Remarks |
|---------|-----------|--------------------------|------------------|------|----------|
| 1 | 1-30-3 | Thread Stand | 245042 | 1 | |
| 2 | 1-37 | Screw, for 245042 | 15/64S28028 | 2 | |
| 3 | GB6175-86 | Nut | 1N6 | 2 | GK26-2 4 |
| 4 | GB859-87 | Spring Washer | 3W6 | 1 | GK26-2 2 |
| 5 | GB95-85 | Washer | 2W6 | 1 | GK26-2 2 |
| 6 | | Thread | K01001 | 1 | GK26-2 2 |
| 7 | 1-30-1 | Thread Cone Clamping Rod | 245052 | 1 | GK26-2 2 |
| 8 | 1-30-2 | Thread Cone Clamping Nut | 245201 | 1 | GK26-2 2 |
| 9 | 1-21 | Top Cover | 245014 | 1 | |
| 10 | S40 | Screw for 245014 | 9/64S40005 | 2 | |
| 11 | 1-39 | Thread Eyelet | 245551 | 1 | GK26-2 |
| 12 | | Thread Tension Assembly | 245081A | 1 | (13-17) |
| 13 | 1-17 | Tension Post | 245081 | 1 | |
| 14 | R56 | Tension Disc | 065261 | 2 | |
| 15 | 1-20 | Tension Spring | 245101 | 1 | |
| 16 | 1-19 | Tension Nut | 245091 | 2 | |
| 17 | 1-18 | Screw, for 245081A | 9/64S40011 | 1 | |
| 18 | 1-11 | Needle Bar Guard | 245033 | 1 | |
| 19 | S40 | Screw, for 245033 | 9/64S40065 | 1 | |
| 20 | S40 | Screw, for 245033 | 9/64S40065 | 2 | |
| 21 | 1-10 | Looper Cover | 245222 | 1 | |
| 22 | S40 | Screw, for 245222 | 9/64S40065 | 3 | |
| 23 | 1-12 | Side Plate | 245022 | 1 | |
| 24 | S40 | Screw, for 245022 | 9/64S40005 | 3 | |
| 25 | 1-40 | Thread Tension Eyelet | | 1 | GK26-2 |
| 26 | 1-13 | Inside Cover | 245302 | 1 | |
| 27 | S40 | Screw, For 245302 | 9/64S40005 | 4 | |
| 28 | GS55 | Screw | 11/64S40 | 1 | GK26-2 |
| 29 | 1-35 | Thread Eyelet | 245261 | 1 | |
| 30 | S40 | Screw, for 245261 | 11/64S40006 | 1 | |
| 31 | 1-30-3A | Thread Stand | | 1 | GK26-2 |
| 32 | 1-16 | Thread Tension Eyelet | 245071 | 1 | GK26-2 2 |

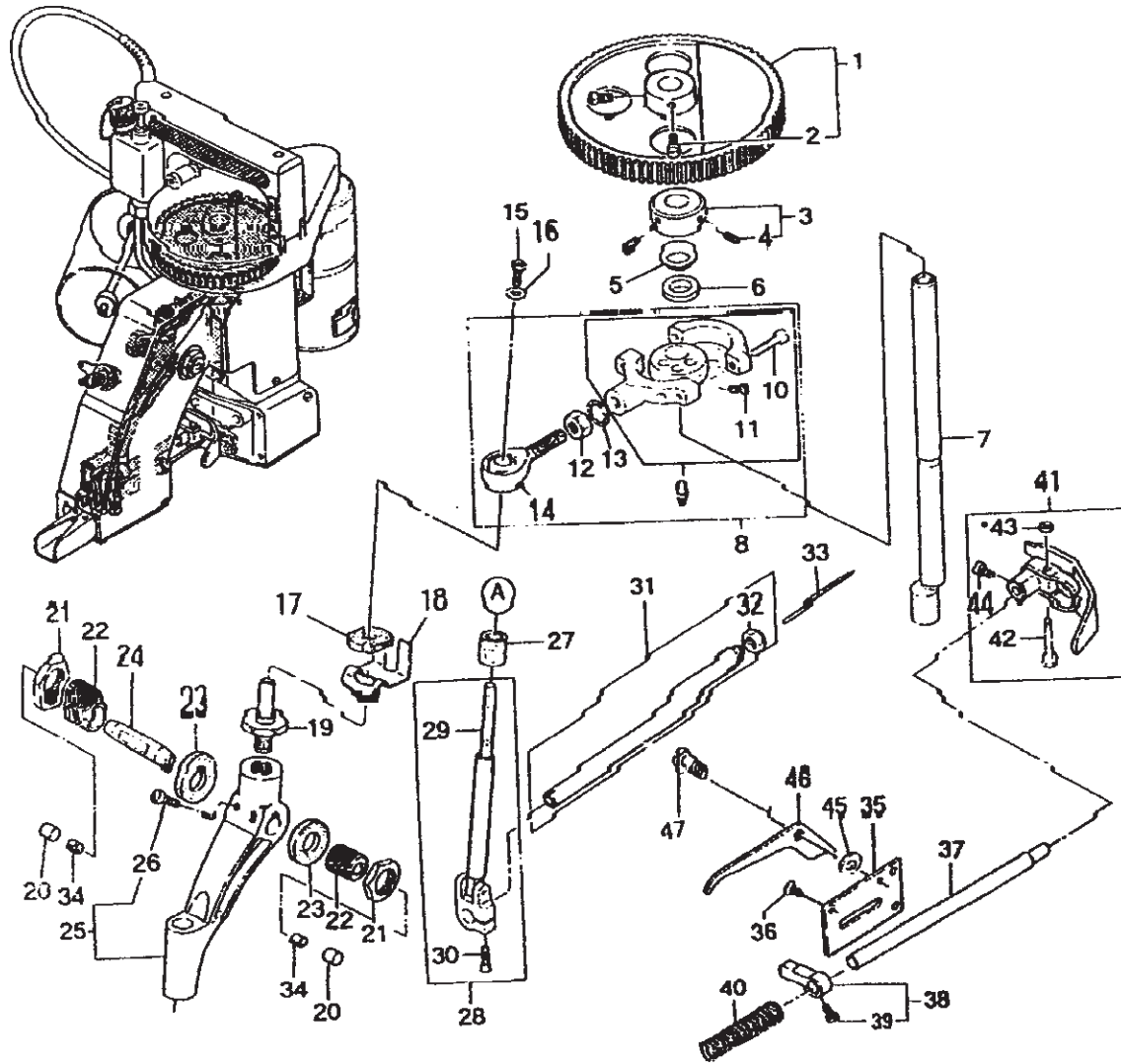
(2) BUSHINGS, OILINGS AND HANDLE PARTS



(2) BUSHINGS, OILINGS AND HANDLE PARTS

| Ref No. | Part No. | Description | Part No. NP-7 | Q'ty | Remarks |
|---------|--|---|------------------|------|---------|
| 1 | | Handle Assembly | 241024AS | 1 | |
| 2 | | Handle Assembly | 241024A | 1 | (3-4) |
| 3 | 1-2 | Handle | 241024 | 1 | |
| 4 | 1-18 | Screw, for 241024A | 9/64S40011 | 2 | |
| 5 | 6-0 | Pump | | 1 | |
| 6 | Lx5-11/D | Micro Switch(Z-15GK655-B) | Q02001 | 1 | |
| 7 | X ₅ C ₈ Y ₁ ^{0A} | Flexible Terminal Block (ML - SK-1, 4P) | Q05008 | 1 | |
| 8 | | Oiler | D03003 | 1 | |
| 9 | | Oil Tube, with oil felt | 8EU2-6x90F | 1 | |
| 10 | | Oil Tube, with oil felt | 8FU2-6x60F | 1 | |
| 11 | GB68-85 | Screw, for D03003 | 6S5x15 | 1 | |
| 12 | 1-36 | Screw, for 241024A | 15/64S28021 | 2 | |
| 13 | 2-11 | Main Shaft Bushing, rear | 241122 | 1 | |
| 14 | S38 | Screw, for 241122 | 11/64S40 | 1 | |
| 15 | S38 | | 11/64S40 | 1 | |
| 16 | 6-14 | Joint(BN-5-6) | D07021 | 1 | |
| 17 | 7-7 | Washer | E03014 | 2 | |
| 18 | 6-15 | Joint | 245471 | 1 | |
| 19 | GB6175-86 | Nut | 1N4 | 1 | |
| 20 | 6-17 | Oil Pipe | 245461 | 1 | |
| 21 | 2-2 | Bushing for Presser Bar & Needle Bar, upper | 242212 | 2 | |
| 22 | S38 | Screw, for 242212 | 11/64S40 | 4 | |
| 23 | 5-8 | Presser Bar Bushing, lower | 242222 | 1 | |
| 24 | 4-19 | Oil Felt | 245541 | 1 | |
| 25 | 2-22 | Main Shaft Bushing, lower | 241111 | 1 | |
| 26 | S38 | Screw, for 241111 | 11/64S40 | 1 | |
| 27 | 3-4 | Looper Rocker Shaft Bushing | 243021 | 1 | |
| 28 | 3-5 | Oil Felt | 245162 | 1 | |
| 29 | 2-4 | Needle Bar | 242212 | 1 | |

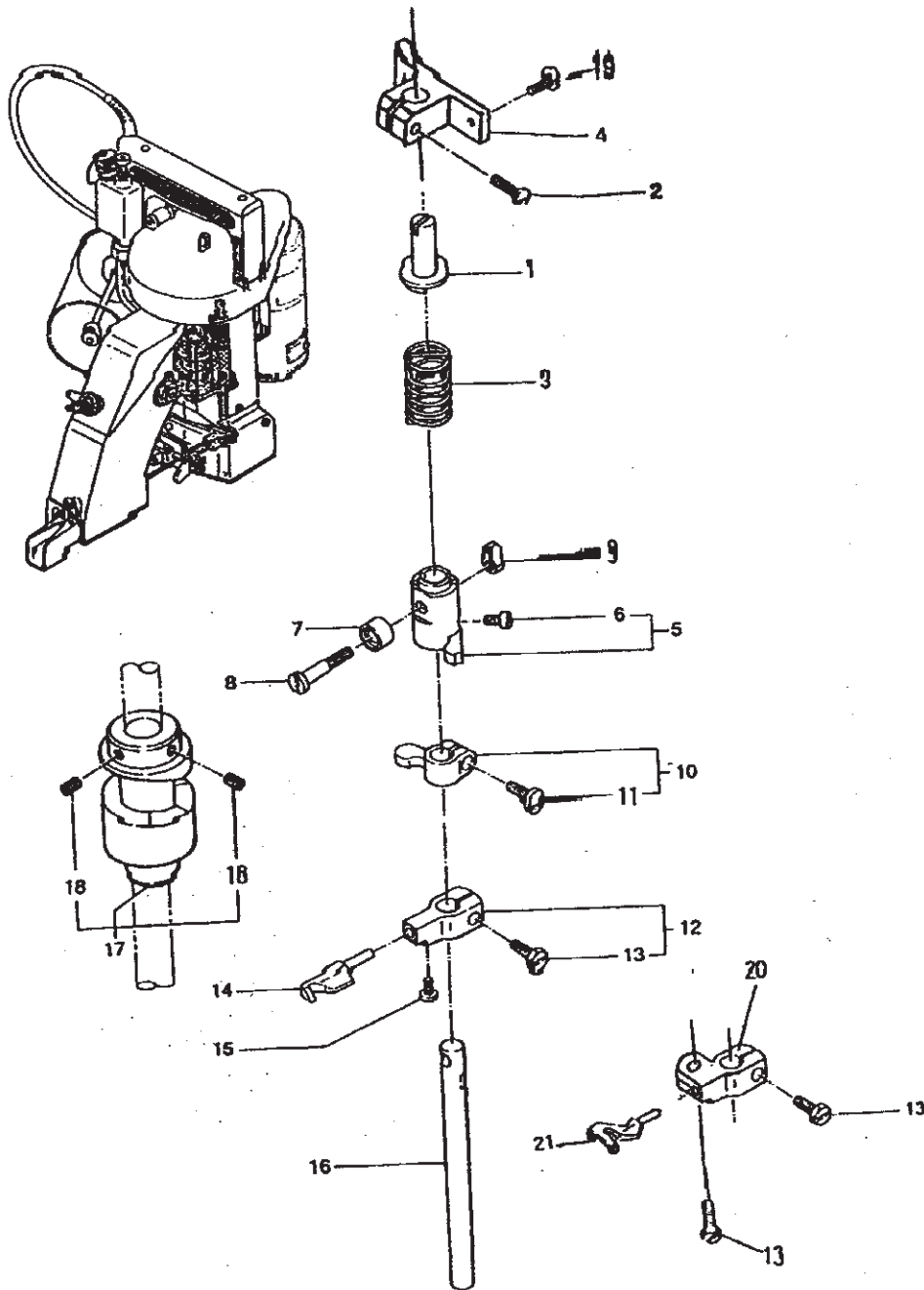
(3) NEEDLE BAR, PRESSER BAR AND DRIVING PARTS



(3) NEEDLE BAR, PRESSER BAR AND DRIVING PARTS

| Ref No. | Part No. | Description | Part No. NP-7 | Q'ty | Remarks |
|---------|-------------------------|--------------------------------|------------------|------|---------|
| 1 | 1-23 | Synchro Pulley | 241092 | 1 | |
| 2 | S30 | Screw, for 241092 | 11/64S40 | 2 | |
| 3 | 2-13 | Retaining Collar | 241131 | 1 | |
| 4 | GS55 | Screw, for 241131 | 11/64S40502 | 2 | |
| 5 | 2-10 | Spacer | 241161 | 1 | |
| 6 | 2-9 | Oil Felt | 205131 | 1 | |
| 7 | 2-12 | Main Shaft | 241102 | 1 | |
| 8 | | Connecting Rod Assembly | 242011A | 1 | |
| 9 | 2-8-1 | Connecting Rod Sub - Assembly | 242011 | 1 | |
| 10 | 2-8-2 | Screw, for connecting rod cap | 3/16S28029 | 2 | |
| 11 | GS55 | Screw, for eccentric cam | 11/64S40001 | 2 | |
| 12 | GB6175-86 | Nut, for 242011A | 1N8 | 1 | |
| 13 | GB861-2-87 | Washer, for 242011A | 5W8 | 1 | |
| 14 | 2-8-5 | Rod End(POS-8) | 6A04001 | 1 | |
| 15 | 4-11 | Screw, for 242031 | 3/16S32 | 1 | |
| 16 | GB95-85 | Washer, for 242031 | 11/64W15103 | 1 | |
| 17 | 2-15 | Oil Felt | 245211 | 1 | |
| 18 | 2-14 | Spring | 242041 | 1 | |
| 19 | 2-16 | Rod End Stud | 242031 | 1 | |
| 20 | | Cap | 245491 | 2 | |
| 21 | 2-19 | Nut, for 242081 | 5/8N18101 | 2 | |
| 22 | 2-18 | Adjusting Stud | 242081 | 2 | |
| 23 | 2-21 | Oil Felt | 245231 | 2 | |
| 24 | 2-20 | Needle Bar Lever Stud | 242071 | 1 | |
| 25 | 2-7 | Needle Bar Lever Assembly | 242051A | 1 | |
| 26 | S30 | Screw, for 242051A | 11/64S40004 | 2 | |
| 27 | 2-3-3 | Oil Felt | 245371 | 1 | |
| 28 | 2-3-1 2-3-2 2-3-4 | Needle Bar Connection Assembly | 242101A | 1 | |
| 29 | 2-3-5 | Oil Felt | 205171 | 1 | |
| 30 | GS55 | Screw, for 242101A | 11/64S40003 | 1 | |
| 31 | 2-1 | Needle Bar with Nut | 242121A | 1 | |
| 32 | 2-5 | Needle Clamp Nut | 242131 | 1 | |
| 33 | 2-6 | Needle(DN×1 #25) | B01002 | 1 | |
| 34 | | Oil Felt | 055561 | 2 | |
| 35 | 5-5 | Presser Foot Lifter Base | 242172 | 1 | |
| 36 | S47 | Screw, for 242172 | 11/64S40002 | 3 | |
| 37 | 5-9 | Presser Bar | 242201 | 1 | |
| 38 | 5-7 | Presser Bar Connection | 242181 | 1 | |
| 39 | GS55 | Screw, for 242181 | 11/64S40003 | 1 | |
| 40 | 5-6 | Presser Spring | 242191 | 1 | |
| 41 | | Presser Foot Assembly | 242231A | 1 | |
| 42 | 5-2 | Screw | 9/64S40055 | 1 | |
| 43 | 5-1 | Nut | 9/64N40101 | 1 | |
| 44 | GS55 | Screw, for 242231A, 242233A | 11/64S40005 | 1 | |
| 45 | 5-13 | Washer | | 1 | |
| 46 | 5-12 | Presser Foot Lifter | 242161 | 1 | |
| 47 | 5-14 | Screw, for 242161 | | 1 | |

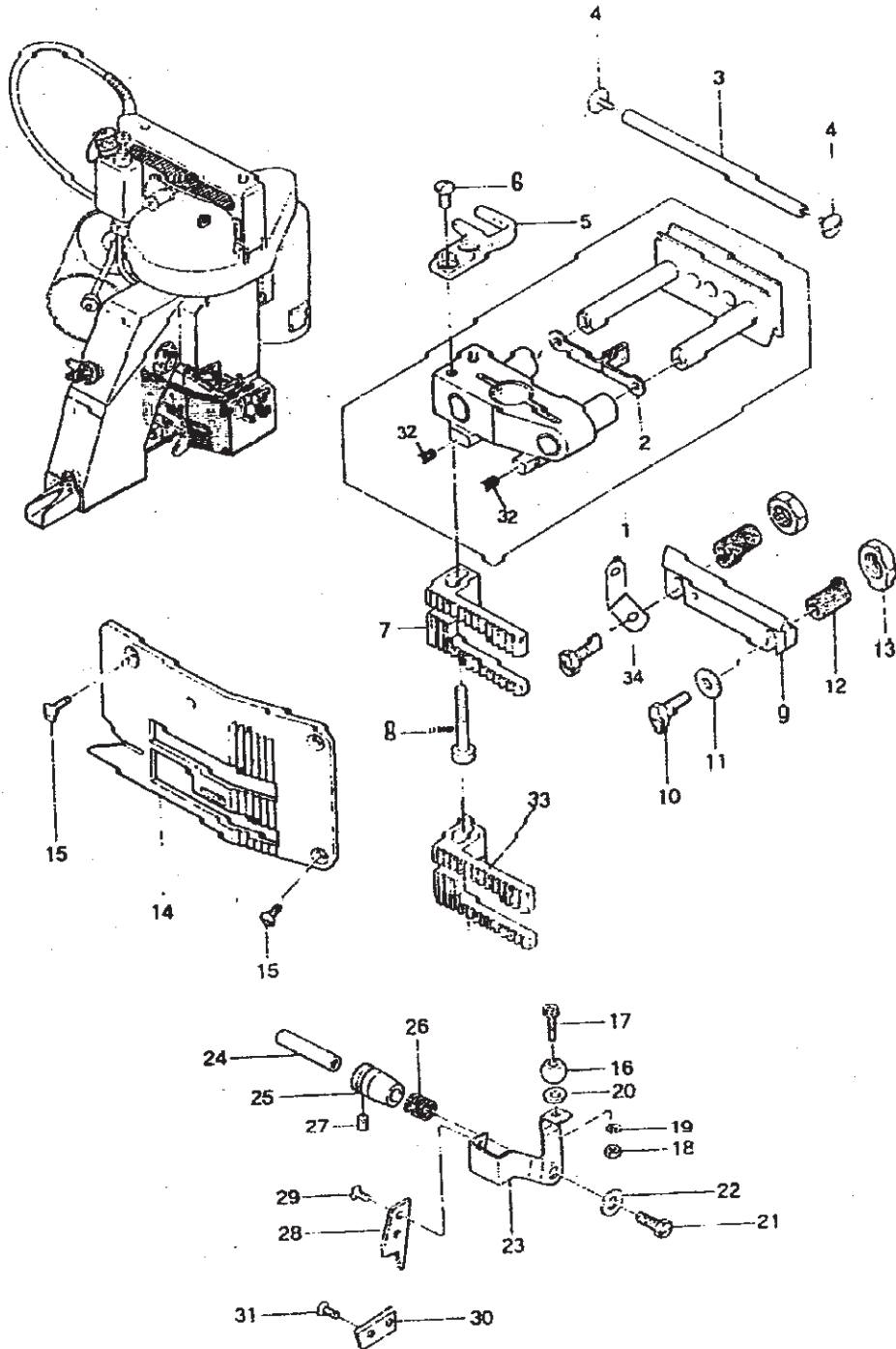
(4) LOOPER DRIVING PARTS



(4) LOOPER DRIVING PARTS

| Ref No. | Part No. | Description | Part No. NP = 7 | Q' ty | Remarks |
|---------|----------|----------------------------|--------------------|-------|------------|
| 1 | 3 - 14 | Spring Supporter | 243121 | 1 | |
| 2 | S30 | Screw | 11/64S40 | 1 | |
| 3 | 3 - 12 | Spring | 243131 | 1 | |
| 4 | 3 - 13 | Spring Supporter Block | 243111 | 1 | |
| 5 | 3 - 8 | Looper Rocker Shaft Arm(A) | 243071 | 1 | |
| 6 | GS55 | Screw, for 243071 | 11/64S40 | 1 | |
| 7 | 3 - 11 | Roller | 243041 | 1 | |
| 8 | 3 - 9 | Roller Stud Screw | 243061 | 1 | |
| 9 | 3 - 10 | Nut, for 243061 | 11/64N40201 | 1 | |
| 10 | 3 - 7 | Looper Rocker Shaft Arm(B) | 243081 | 1 | |
| 11 | GS55 | Screw, for 243081 | 11/64S40 | 1 | |
| 12 | 3 - 2 | Looper Rocker | 243092 | 1 | |
| 13 | 3 - 15 | Screw, for 243092 | 11/64S40089 | 1 | GK26 - 2 2 |
| 14 | 3 - 1 | Looper | 243102 | 1 | |
| 15 | S40 | Screw, for 243102 | 9/64S40001 | 1 | |
| 16 | 3 - 3 | Looper Rocker Shaft | 243032 | 1 | |
| 17 | 3 - 6 | Looper Drive Cam | 243012 | 1 | |
| 18 | S2 | Screw, for 243012 | 15/64S28524 | 2 | |
| 19 | S40 | Screw | 9/64S40 | 2 | |
| 20 | 3 - 2A | Looper Rocker | | 1 | GK26 - 2 |
| 21 | 3 - 1A | Looper | | 1 | GK26 - 2 |

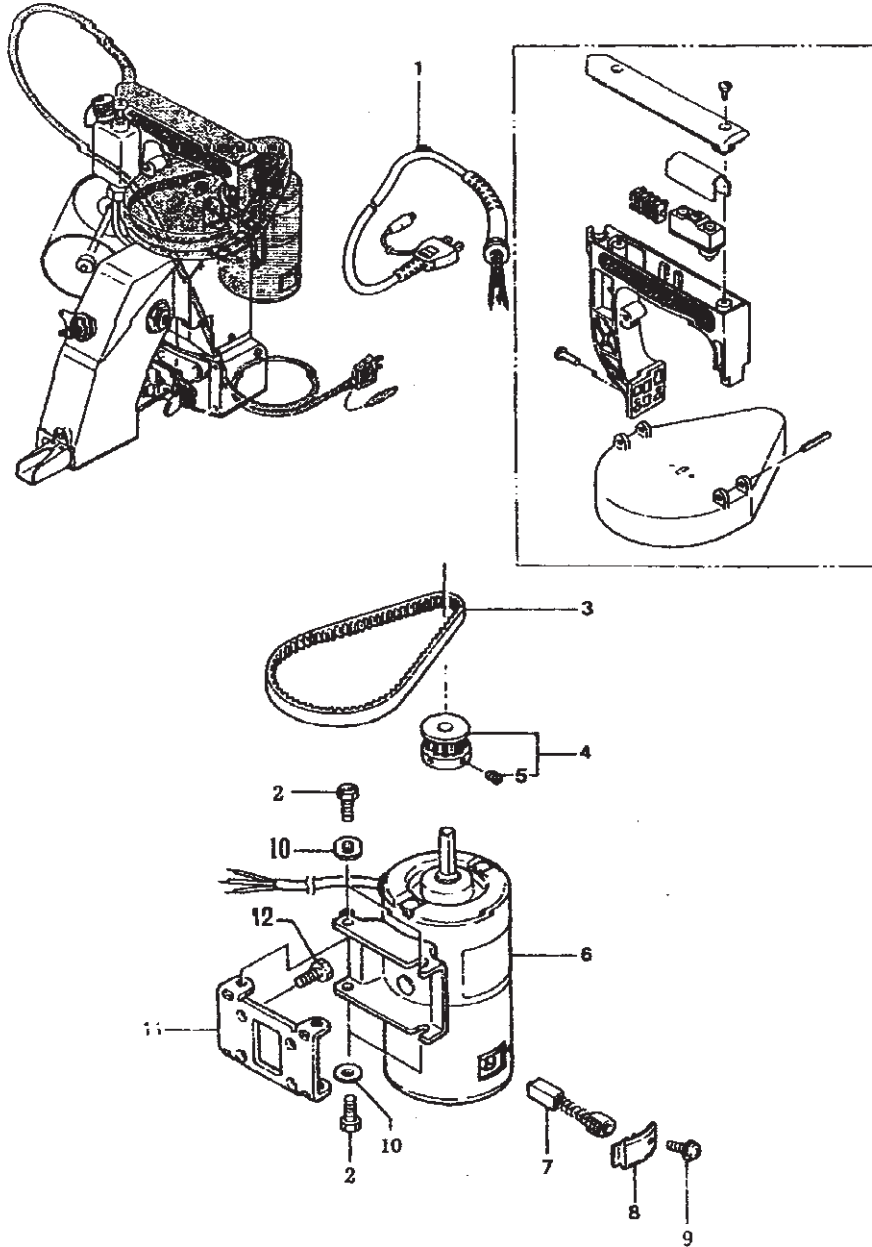
(5) FEED DRIVING AND THREAD CUTTER PARTS



(5) FEED DRIVING AND THREAD CUTTER PARTS

| Ref No. | Part No. | Description | Part No. NP-7 | Q'ty | Remarks |
|---------|-----------|------------------------------------|------------------|------|----------|
| 1 | 4-18 | Feed Dog Carrier Block Assembly | 244011A | | |
| 2 | 4-21 | Oil Felt | 245391 | 1 | |
| 3 | 4-25 | Slide Block Guide Stud | 244102 | 1 | |
| 4 | 1-18 | Screw, for 244102 | 9/64S40011 | 2 | |
| 5 | 4-15 | Knife Bracket Extension | 246011 | 1 | |
| 6 | 4-11 | Screw, for 246011 | 3/16S32031 | 2 | |
| 7 | 4-14 | Feed Dog | 244111 | 1 | |
| 8 | 4-12 | Screw, for 244111 | 3/16S32034 | 1 | |
| 9 | 4-24 | Slide Block Adjusting | 244081 | 1 | |
| 10 | 4-23 | Lock Bolt, for 244091 | 3/16S32025 | 2 | |
| 11 | 2-24 | Washer, for 244091 | 11/64W15103 | 2 | GK26-2 1 |
| 12 | 4-2 | Stud Slide Block Adjusting Support | 244091 | 2 | |
| 13 | 4-1 | Lock Nut, for 244091 | 3/8N24201 | 2 | |
| 14 | 4-13 | Throat Plate | 244122 | 1 | |
| 15 | 4-10 | Screw, for 244122 | 9/64S40043 | 3 | |
| 16 | 4-9-2 | Ball | 246081 | 1 | |
| 17 | GB5783-86 | Bolt, for 246081 (M3 × 0.5 × 12) | 4B × 12 | 1 | |
| 18 | GB6175-86 | Nut, for 246081 (M3 × 0.5) | 1N3 | 1 | |
| 19 | GB859-87 | Spring Lock washer (M3) | 3W3 | 1 | |
| 20 | GB95-85 | Washer, for 246081 (M3) | 1W3 | 1 | |
| 21 | GSS5 | Screw, for 246021 | 11/64S40049 | 1 | |
| 22 | GB95-85 | Washer, for 246021 | 11/64W15103 | 1 | |
| 23 | 4-9-1 | Knife Bracket | 246021 | 1 | |
| 24 | 4-5 | Knife Bracket Pin | 246032 | 1 | |
| 25 | 4-4 | Bushing, for 246032 | 246042 | 1 | |
| 26 | 4-6 | Knife Tension Spring | 246051 | 1 | |
| 27 | S38 | Screw, for 246042 | 11/64S40 | 1 | |
| 28 | 4-9-3 | Knife Moving | 246061 | 1 | |
| 29 | 4-7 | Screw, for 246061 | 1/8S40003 | 2 | |
| 30 | 4-8 | Knife Stationary | 246071 | 1 | |
| 31 | 4-7 | Screw, for 246071 | 1/8S40003 | 2 | |
| 32 | 4-17 | Screw | | 2 | |
| 33 | 4-14A | Feed Dog | | 1 | GK26-2 |
| 34 | 1-35 | Thread Eyelet | | 1 | GK26-2 |

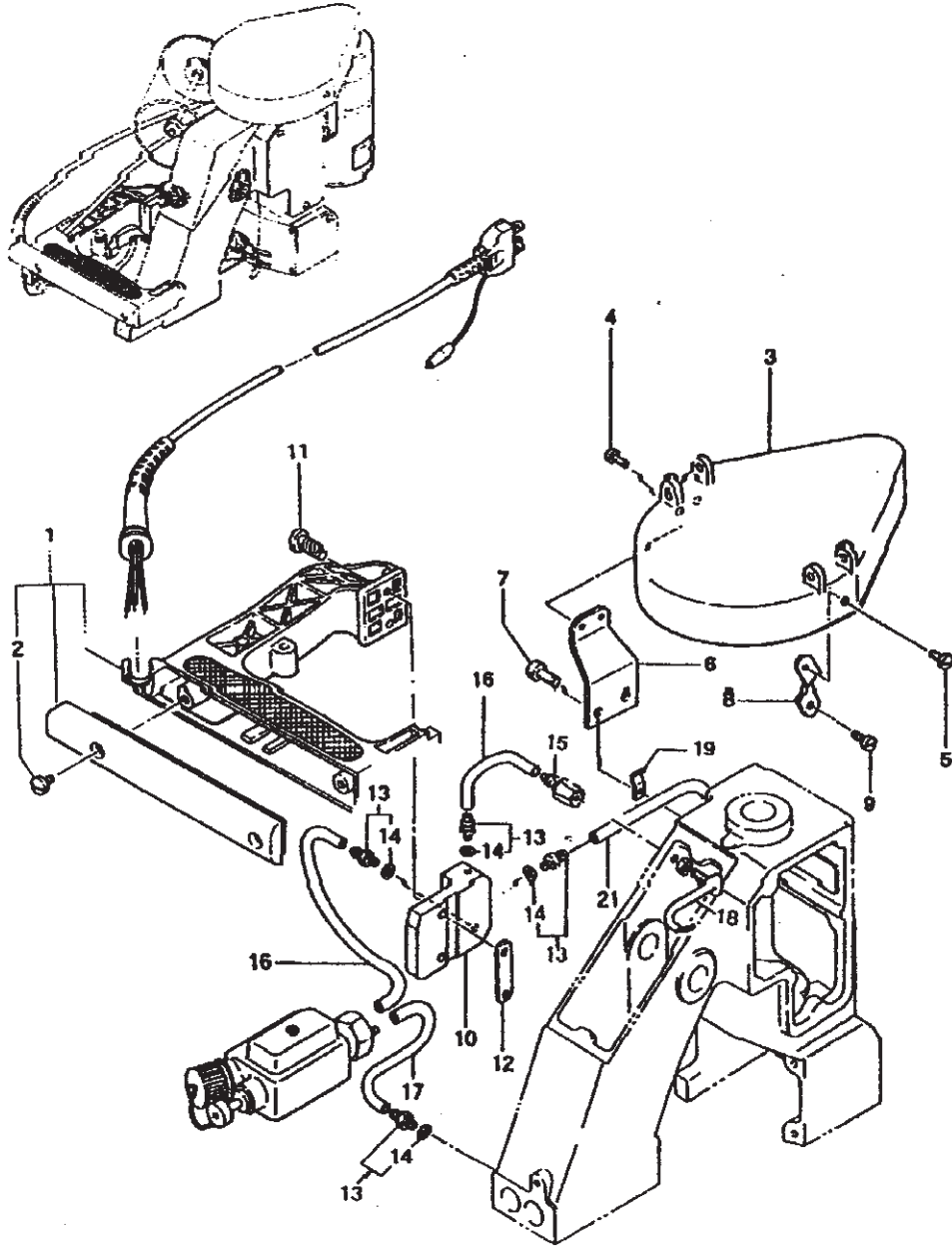
(6) MOTOR, PARTS (For Totally Enclosed Type Motor)



(6) MOTOR, PARTS (For totally Enclosed Type Motor)

| Ref No. | Part No. | Description | Part No. NP-7 | Q' ty | Remarks |
|---------|----------|--|------------------|-------|---------|
| 1 | 1-9 | Cabtyer Cord, With Plug (Standard Type) | C04001 | 1 | |
| | | Cabtyer Cord, With Plug (American Type) | C04003 | 1 | |
| | | Cabtyer Cord, Word, With Plug (British Type) | C04004 | 1 | |
| | | Cabtyer Cord, With Plug (German Type) | C04005 | 1 | |
| | | Cabtyer Cord, With Plug (French Type) | C04006 | 1 | |
| | | Cabtyer Cord, With Plug (Australian Type) | C404007 | 1 | |
| | | Cabtyer Cord, With Plug (South Africa Type) | C04012 | 1 | |
| 2 | 3-15 | Screw | 11/64S40091 | 4 | |
| 3 | 1-22 | Timing Belt | F01001 | 1 | |
| 4 | 1-29 | Motor Pulley | 241083 | 1 | |
| 5 | S38 | Screw, for 241083 | | 2 | |
| 6 | | Universal Motor (220V - 90W) | C01028 | 1 | |
| | | Universal Motor (240V - 90W) | C01029 | 1 | |
| | | Universal Motor (110V - 90W) | C01030 | 1 | |
| 7 | | Carbon Brush | C08004 | 2 | |
| 8 | | Cap | C07003 | 2 | |
| 9 | GB818-85 | Screw | 4S3 x 6 - W | 2 | |
| 10 | GB95-85 | Washer | 11/64W10101 | 4 | |
| 11 | 1-27 | Motor Base B | 241073 | 1 | |
| 12 | 1-32 | Screw, for 241073 | 15/64S28004 | 4 | |

(7) SPECIAL PARTS FOR GK26 - 1H



(7) SPECIAL PARTS FOR GK26 - 1H

| Ref No. | Part No. | Description | Part No. NP-7 | Q'ty | Remarks |
|---------|----------|--|-----------------------|------|----------|
| 1 | 1-2-1 | Handle | 241024 | 1 | GK26-1 H |
| 2 | 1-18 | Screw | 9/64S40011 | 2 | |
| 3 | 1-2-2 | Pulley Cover | 241212 | 1 | GK26-1 H |
| 4 | GB65-85 | Screw, for 241053 | 9/64S40004 | 2 | GK26-1 H |
| 5 | GB65-85 | Screw, for 241053 | 9/64S40052 | 1 | GK26-1 H |
| 6 | 7-1 | Pulley Cover Holder A | 241242 | 1 | GK26-1 H |
| 7 | 1-32 | Screw, for 241242 | 15/64S28004 | 2 | |
| 8 | 7-2 | Pulley Cover Holder B | 241231 | 1 | GK26-1 H |
| 9 | S40 | Screw, for 241231 | 9/64S40005 | 1 | |
| 10 | 7-3 | Handle Base | 241223 | 1 | GK26-1 H |
| 11 | GB70-85 | Screw, for 241253 | 15/64S28032 | 2 | |
| 12 | 7-4 | Handle Base Holder | 241253 | 1 | GK26-1 H |
| 13 | 7-5 | Joint(BN-5-6) | D07021 | 4 | GK26-1 H |
| 14 | 7-7 | Washer | E03014 | 3 | |
| 15 | 6-15 | Joint | | 1 | |
| 16 | | Oil Tube ($\phi 6 \times 95\ell$), With oil felt | 8FU2 - 6 \times 95F | 2 | |
| 17 | | Oil Tube ($\phi 6 \times 70\ell$), With oil felt | 8FU2 - 6 \times 70F | 1 | |
| 18 | 6-17 | Oil Pipe | 245462 | 1 | |
| 19 | 7-6 | Tube Dlip | DO7009 | | |