

RUFFLER BLADES

Pages 21, 22, and 23 contain actual size illustrations of various TOP RUFFLER BLADES and BOTTOM BLADES used with Man-Sew Rufflers.

Most blades are available with either coarse or fine teeth. When ordering please specify the type teeth desired.

The part number of the blade is usually inscribed on the underneath side of the blade.

NOTE: If you don't see the ruffler blade you need call or fax us toll free.

We make special blades to order in any quantity.



101



101 B



101 RC



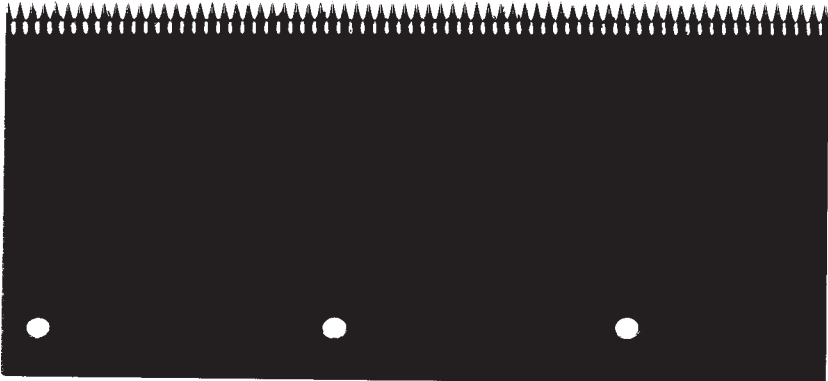
101 Z



100-L



100-R



199155



106 E



106 P



106 PB



106-15/16



108



108 B

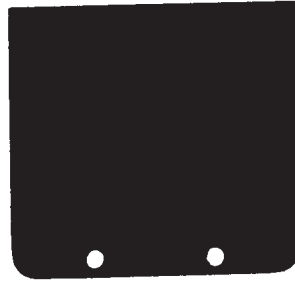
RUFFLER BLADES



109 TE



110 TE



112—1½



200



200 B¼



200 C



200 SB



200 SBL



200 T¼



202



204½



204¾



208-108



208



208 L



208 Z



208½



210½

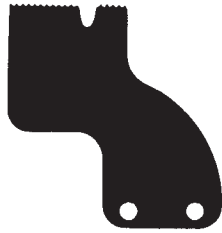


210½ Z

RUFFLER BLADES



211



213



213 C



213 C BL



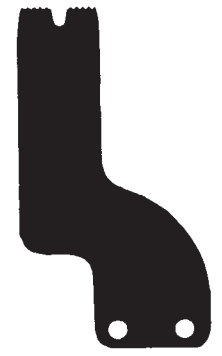
213 CLE



213 P



213 C 1/2 B



213 C 1/2



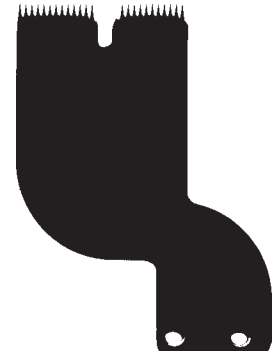
213 C 1/2 RLE



213 C 1/2 RU



213 1/2 VD



213C1/2VD7/16



220—1"



220 Z

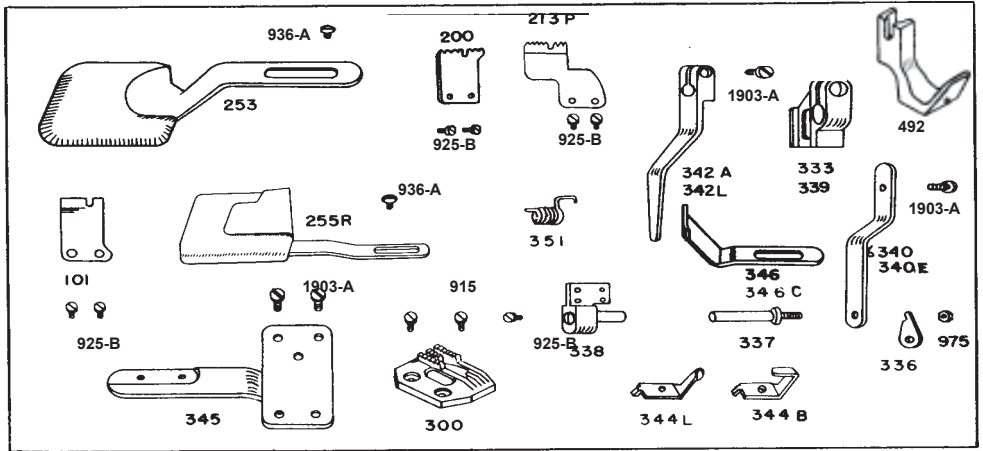
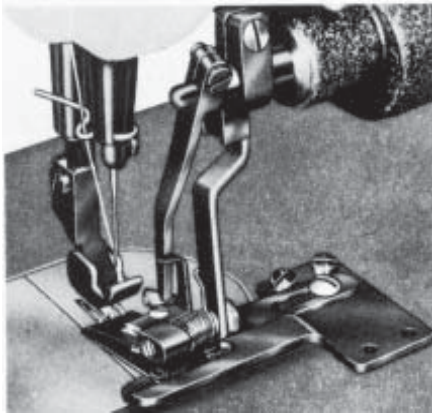
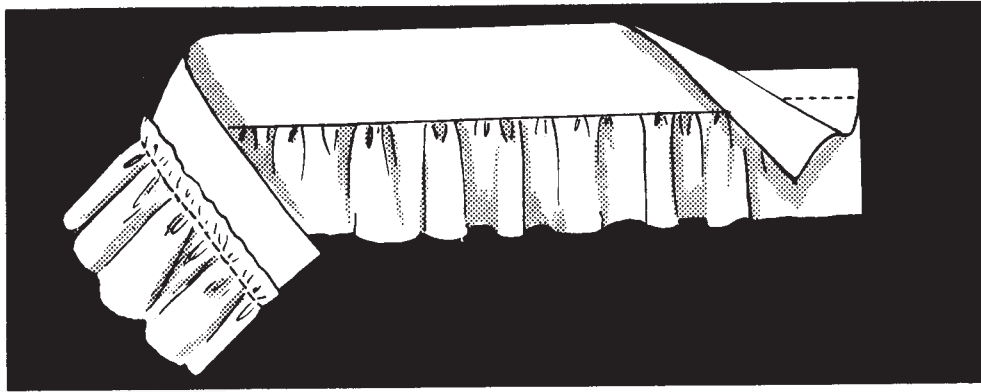


6301



6302

FITTINGS for STYLE 21
Intermittent Ruffling (for Sleevesetting, etc.)



PART NAME	Model B for Singer 95 and 96	Model GM	Model G for Singer 241 and 245	Model F-H-K for Singer 400W 451K & 600W	Model BU for Singer 251
Bottom Stripper Blade	101	101	101	101	101
Top Ruffler Blade	200	213P	213P	213P	200
Blade Tension Lever	336	336	336	336	336
Blade Holder Shaft	337	337	337	337	337
Blade Holder	338	338	338	338	338
Kicker Arm Hub	339	339	339	339	333
Kicker Arm	6340	6340	6340	340E	6340
Tripper	342L	342A	342A	342A	342L
Finger Trip	344L	344B	344B	344B	344L
Blade Tension Spring	351	351	351	351	350
Feed Dog	300	300	300	300	300
Foot	492	492	492	492	492
Cloth Guide	346	346C	346C	346C	346C
Bottom Bracket	345	345	345	345	345
Edge Guide (optional)	253	253	253	253	253
Edge Guide (optional)	255R	255R	255R	255R	255R

Screws and Nuts

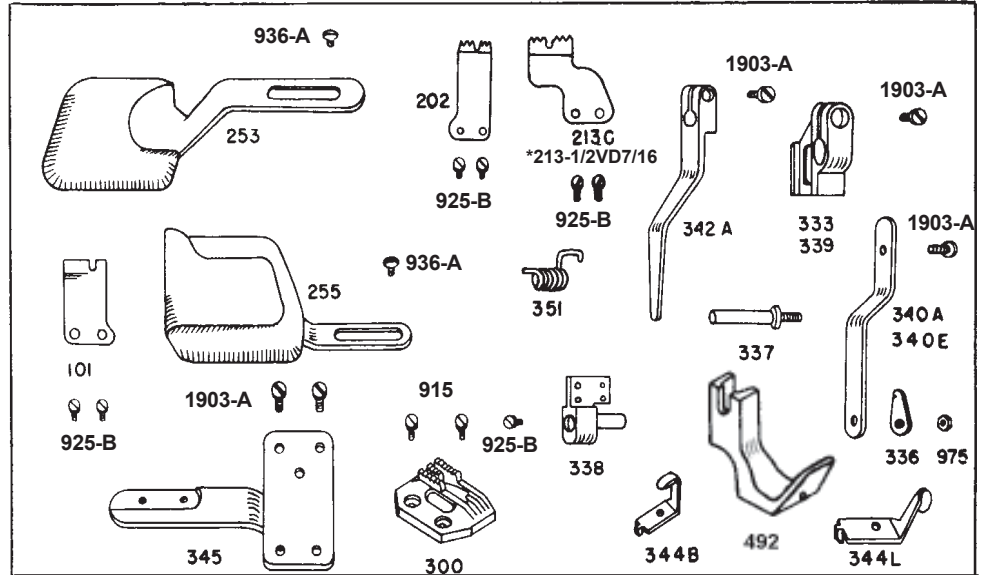
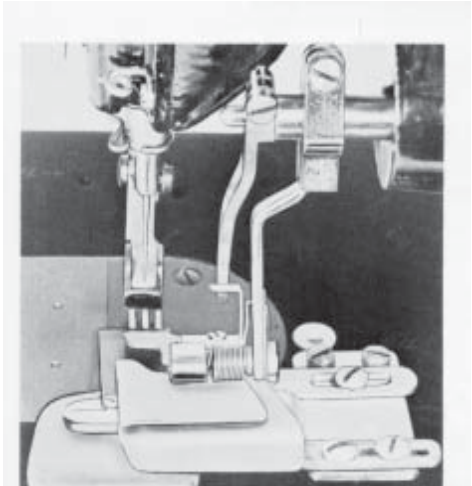
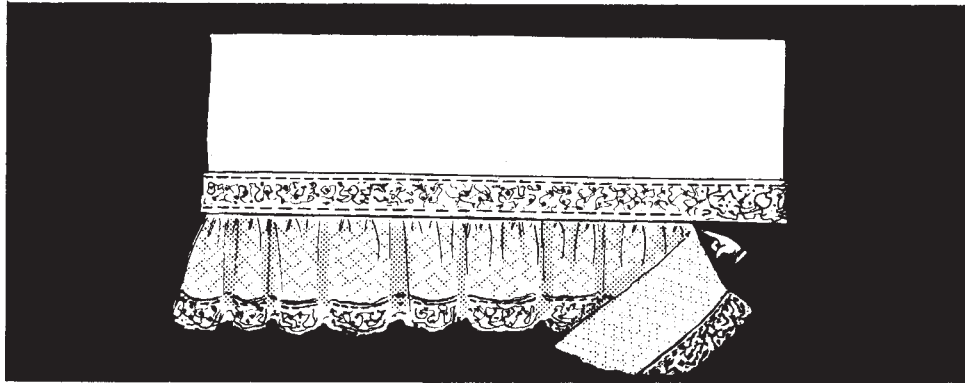
- | | | | |
|-------|--|--------|--|
| 915 | Screw for part 300 | 1903-A | Screw for parts 333, 339, 340A, 340E, 342A, 342L and 345 |
| 925-B | Screw for parts 101, 200, 213P and 337 | 936-A | Screw for part 253 |
| 936 | Screw for part 346 | 936-A | Screw for part 255R |
| 975 | Lock nut for part 337 | | |

PARTS IN MAIN RUFFLER CASTINGS ARE LISTED AND ILLUSTRATED IN FRONT OF BOOK (Pages 12 to 19)

When ordering please specify the part number and part name.

FITTINGS for STYLE 22

Edge-to-Edge Ruffling (CURTAIN RUFFLING)



*USE 213-1/2VD7/16 FOR CURTAIN RUFFLING

PART NAME	Model B for Singer 95 and 96	Model GM	Model G for Singer 241 and 245	Model F-H-K for Singer 400W 451K & 600W	Model BU for Singer 251
Bottom Stripper Blade	101	101	101	101	101
Top Ruffler Blade	202	* 213C	* 213C	* 213C	* 213C
Blade Tension Lever	336	336	336	336	336
Blade Holder Shaft	337	337	337	337	337
Blade Holder	338	338	338	338	338
Kicker Arm Hub	339	339	339	339	333
Kicker Arm	340A	340A	340A	340E	340A
Tripper	342A	342A	342A	342A	342A
Finger Trip	344L	344B	344B	344B	344L
Blade Tension Spring	351	351	351	351	351
Feed Dog	300	300	300	300	300
Foot	395	395	395	395	395
Bottom Bracket	345	345	345	345	345
Edge Guide — Left	253	253	253	253	253
Edge Guide — Right	255	255	255	255	255

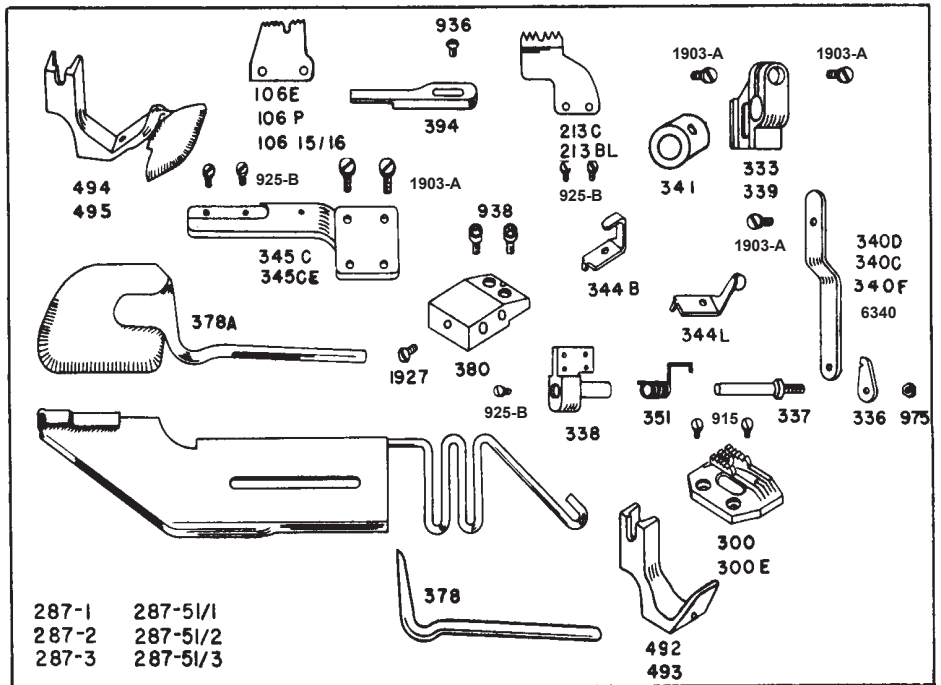
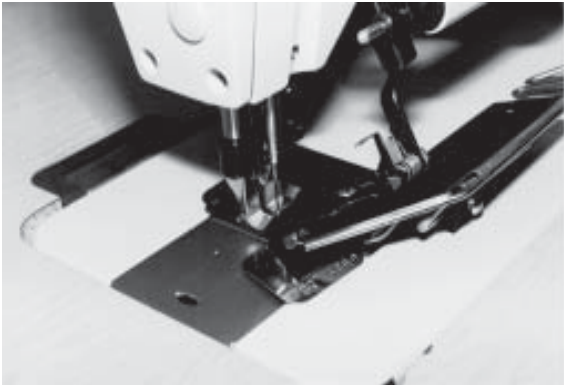
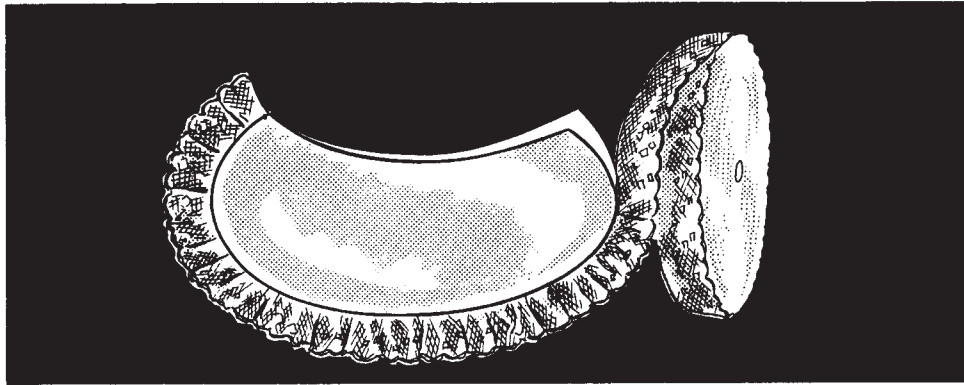
- Screws and Nuts**
- 915 Screw for part 300
 - 925-B Screw for parts 101, 202, 213C and 337
 - 936 Screw for parts 253 and 255
 - 975 Lock nut for part 337
 - 1903-A Screw for parts 339, 340A, 340E, 342A, and 345

PARTS IN MAIN RUFFLER CASTINGS ARE LISTED AND ILLUSTRATED IN FRONT OF BOOK (Pages 12 to 19)

When ordering please specify the part number and part name.

FITTINGS for STYLE 31

Ruffling Lace between Two Ply Collar



Screws and Nuts

- 915 Screw for parts 300 and 300E
- 925-B Screw for parts 106E, 106P, 106-15/16, 213BL and 213C
- 936 Screw for part 338
- 938 Screw for part 380
- 975 Lock nut for part 337
- 1903-A Screw for parts 333, 339, 340C, 340F, 340D, 341, 345C, 345-C and 6340

PARTS IN MAIN RUFFLER CASTINGS ARE LISTED AND ILLUSTRATED IN FRONT OF BOOK (Pages 12 to 19)

When ordering please specify the part number and part name.

FITTINGS for STYLE 31

Ruffling Lace between Two Ply Collar

PART NAME	Model GM	Model G for Singer 241 and 245	Model F-H-K for Singer 400W 451K & 600W	Model 151W	Model BU
Top Ruffler Blade	213C	213C	213C	213BL	213C
Blade Tension Lever	336	336	336	336	336
Blade Holder Shaft	337	337	337	337	337
Blade Holder	338	338	338	338	338
Kicker Arm Hub	339	339	339	339	333
Kicker Arm	340C	340C	340F	340D	340C
Collar	341	341	341	341	341
Finger Trip	344B	344B	344B	344L	344L
Blade Tension Spring	351	351	351	351	351
Lace Guide Block	380	380	380	380	380
Guide for Middle Ply	394	394	394	394	394
1½" Lace Guide	287-1	287-1	287-1	287-51/1	287-1
2" Lace Guide	287-2	287-2	287-2	287-51/2	287-2
3" Lace Guide	287-3	287-3	287-3	287-51/3	287-3

PARTS FOR EDGE CUTTER MACHINE

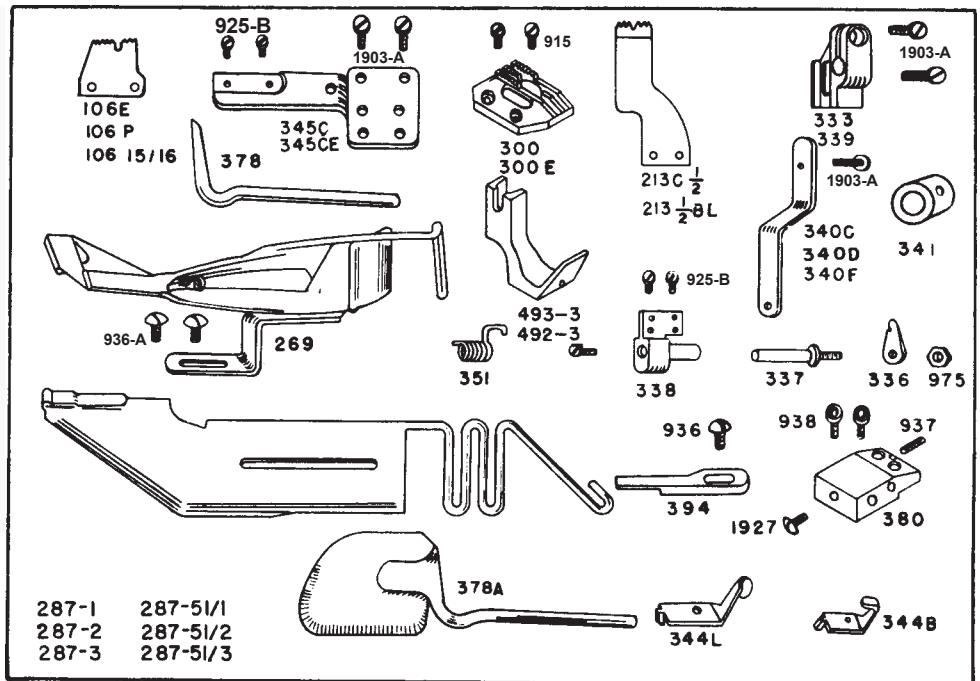
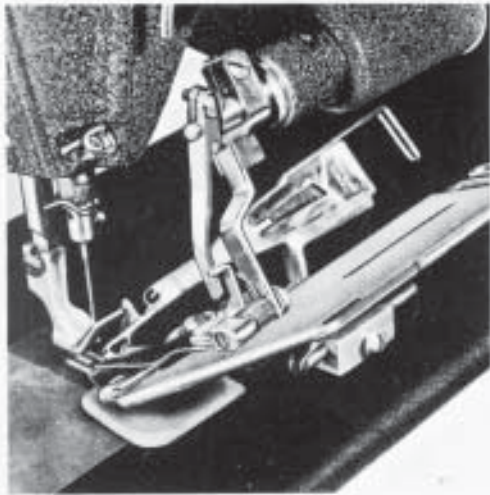
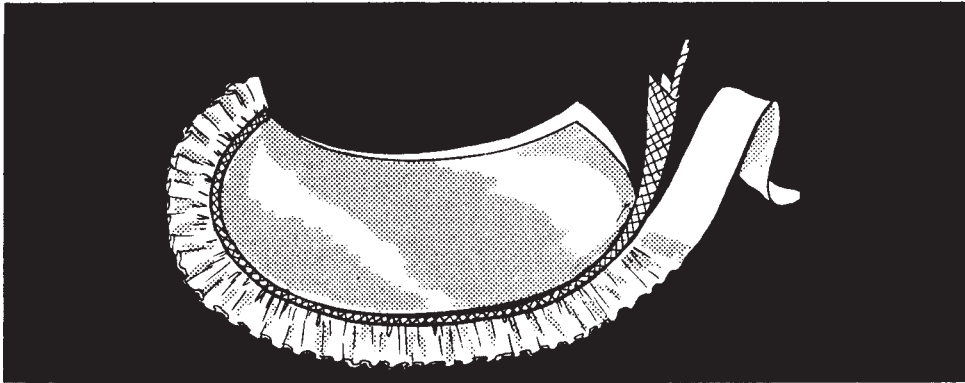
Bottom Blade	106E	106E	—	—	—
Foot — without guide	493	493	—	—	—
Foot — with guide	494	494	—	—	—
Feed Dog	300E	300E	—	—	—
Guide for Bottom Ply	378	378	—	—	—
Bottom Bracket	345CE	345CE	—	—	—

PARTS FOR PLAIN MACHINE (No Edgecutter)

Bottom Blade	106P	106P	106P	106-15/16	106P
Foot — without guide	492	492	492	—	492
Foot — with guide	495	495	495	—	495
Feed Dog	300	300	300	—	300
Guide for Bottom Ply	378A	378A	378A	378	378A
Bottom Bracket	345C	345C	345C	—	345C

FITTINGS for STYLE 34

Ruffling Lace between Two Ply Collar and Inserting Cord and Piping



Screws and Nuts

- 936-A Screw for part 269
- 915 Screw for parts 300 and 300E
- 925-B Screw for parts 106E, 106P, 106-15/16 and 337
- 936 Screw for parts 394
- 938 Screw for part 380
- 975 Lock nut for part 337
- 1903-A Screw for parts 333, 339, 340C, 340D, 340F, 340G, 341, 345C and 345CE
- 1927 Screw for part 380

PARTS IN MAIN RUFFLER CASTINGS ARE LISTED AND ILLUSTRATED IN FRONT OF BOOK (Pages 12 to 19)

When ordering please specify the part number and part name.

FITTINGS for STYLE 34

Ruffling Lace between Two Ply Collar and Inserting Cord and Piping

PART NAME	Model GM	Model G for Singer 241 and 245	Model F-H-K for Singer 400W 451K & 600W	Model BW (ON WALKING FOOT MACHINE)	Model BU (RUFFLER ON LEFT SIDE)
Top Ruffler Blade	* 213C½	* 213C½	* 213C½	213½BL	*213C½
Blade Tension Lever	336	336	336	336	336
Blade Holder Shaft	337	337	337	337	337
Blade Holder	338	338	338	338	338
Kicker Arm Hub	339	339	339	339	333
Kicker Arm	340C	340C	340F	340D	340C
Collar	341	341	341	341	341
Finger Trip	344B	344B	344B	344L	344L
Blade Tension Spring	351	351	351	351	351
Lace Guide Block	380	380	380	380	380
1½" Lace Guide	287-1	287-1	287-1	287-51/1	287-1
2" Lace Guide	287-2	287-2	287-2	287-51/2	287-2
3" Lace Guide	287-3	287-3	287-3	287-51/3	287-3
Guide for Middle Ply	394	394	394	394	394
Cord Piper Folder ‡	269	269	269	269	269

* USE 213C1/2B FOR EDGE CUTTER

PARTS FOR EDGE CUTTER MACHINE

Bottom Blade	106E	106E	—	—	—
Foot	493-3	493-3	—	—	—
Feed Dog	300E	300E	—	—	—
Bottom Bracket	345CE	345CE	—	—	—
Guide for Bottom Ply	378	378	—	—	—

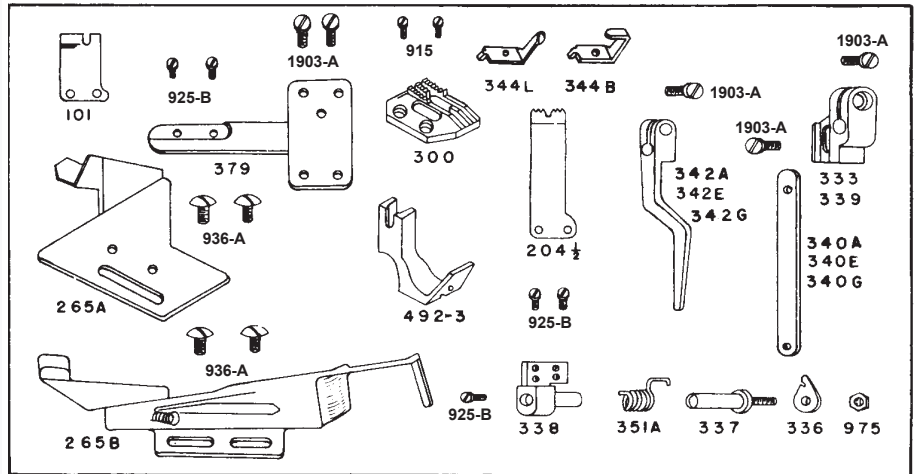
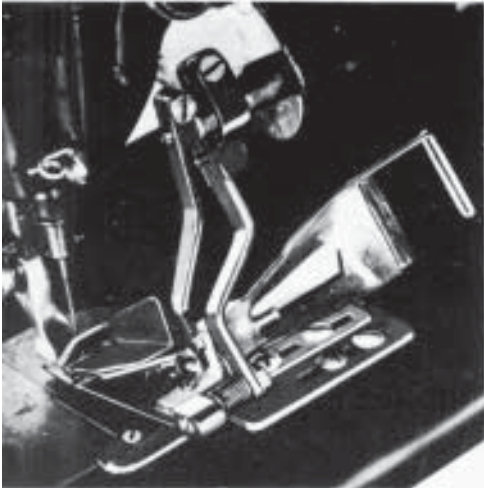
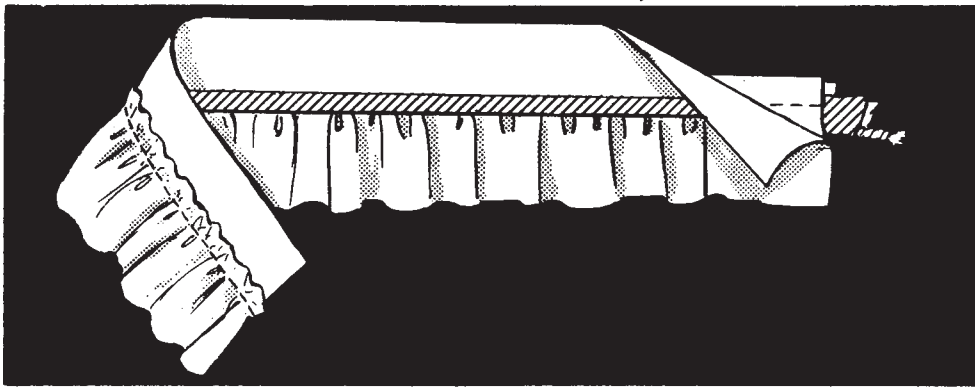
PARTS FOR PLAIN MACHINE (No Edgecutter)

Bottom Blade	106P	106P	106P	106-15/16	106P
Foot	492-3	492-3	492-3	—	492-3
Feed Dog	300	300	300	—	300
Bottom Bracket	345C	345C	345C	345C	345C
Guide for Bottom Ply	378A	378A	378A	378	378A

‡ Submit sample of cord and piping with order as size of cord-piper folder is determined by width of piping material and thickness of cord used.

FITTINGS for STYLE 35

Cord Piping and Ruffling



PART NAME	Model B for Singer 95 and 96	Model GM	Model G for Singer 241 and 245	Model F-H-K for Singer 400W 451K & 600W	Model BU (Ruffler on left side of sewing machine)
Bottom Stripper Blade	101	101	101	101	101
Top Ruffler Blade	204½	204½	204½	204½	204½
Blade Tension Lever	336	336	336	336	336
Blade Holder Shaft	337	337	337	337	337
Blade Holder	338	338	338	338	338
Kicker Arm Hub	339	339	339	339	333
Kicker Arm	340A	6340	340G	340E	340A
Tripper	342A	6342	342G	342E	342A
Finger Trip	344L	344B	344B	344B	344L
Blade Tension Spring	351A	351A	351A	351A	351A
Foot	492-3	492-3	492-3	492-3	492-3
Bottom Bracket	379	379	379	379	379
Cord Piper Base	265A	265A	265A	265A	265A
Cord Piper Folder*	265B	265B	265B	265B	265B
Feed Dog	300	300	300	300	300

Screws and Nuts

915 Screw for part 300

925-B Screw for parts 101, 204½ and 337

936-A Screw for part 265A and 265B

975 Lock nut for part 337

1903-A Screw for parts 333, 339, 340A, 340E, 340G, 342A, 342E, 342G and 379

* Submit sample of cord and piping with order as size of cord-piper folder is determined by width of piping material and thickness of cord used.

PARTS IN MAIN RUFFLER CASTINGS ARE LISTED AND ILLUSTRATED IN FRONT OF BOOK (Pages 12 to 19)

When ordering please specify the part number and part name.